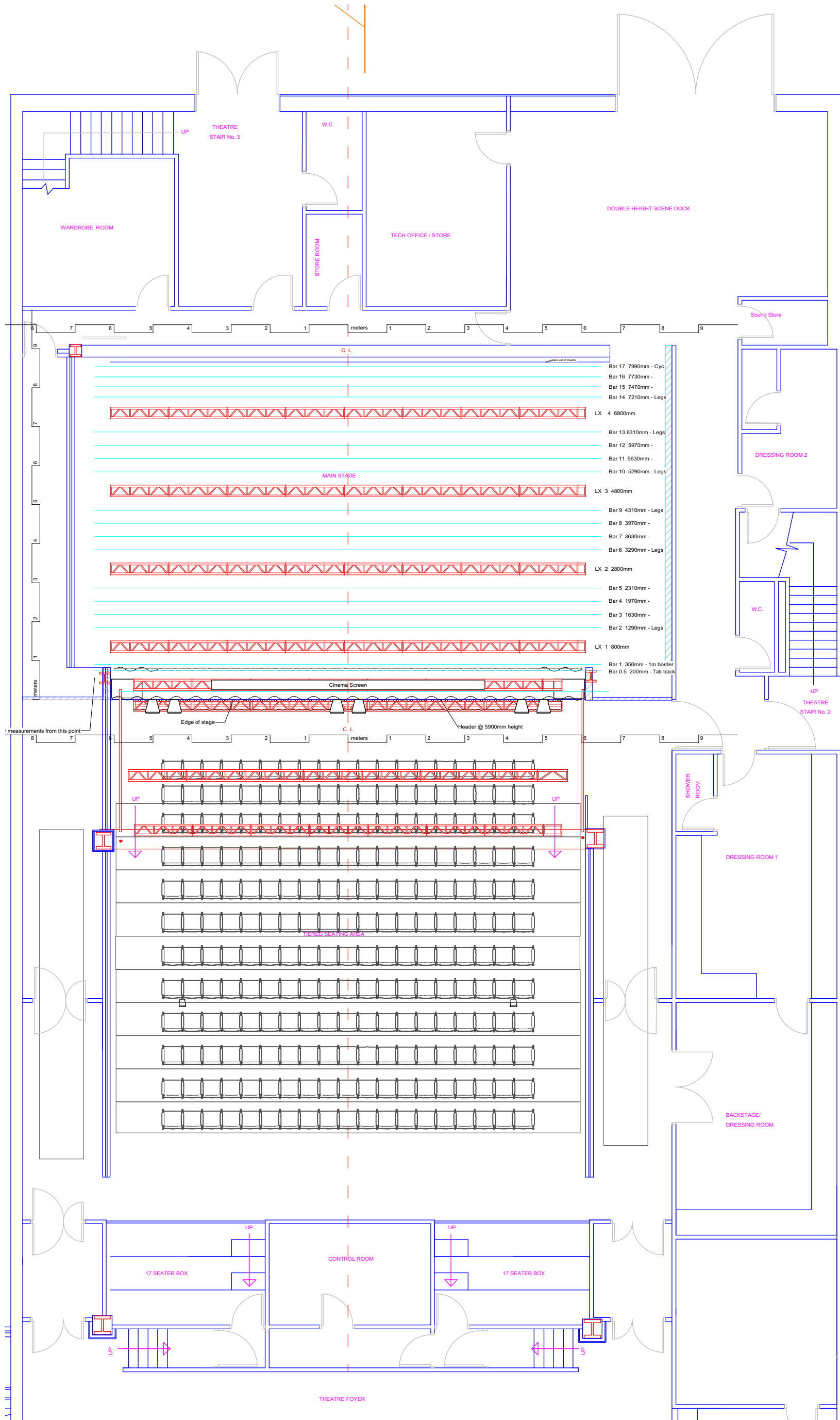


NOTES:

1. All dimensions provided are indicative only. Any critical dimensions to be confirmed on location.



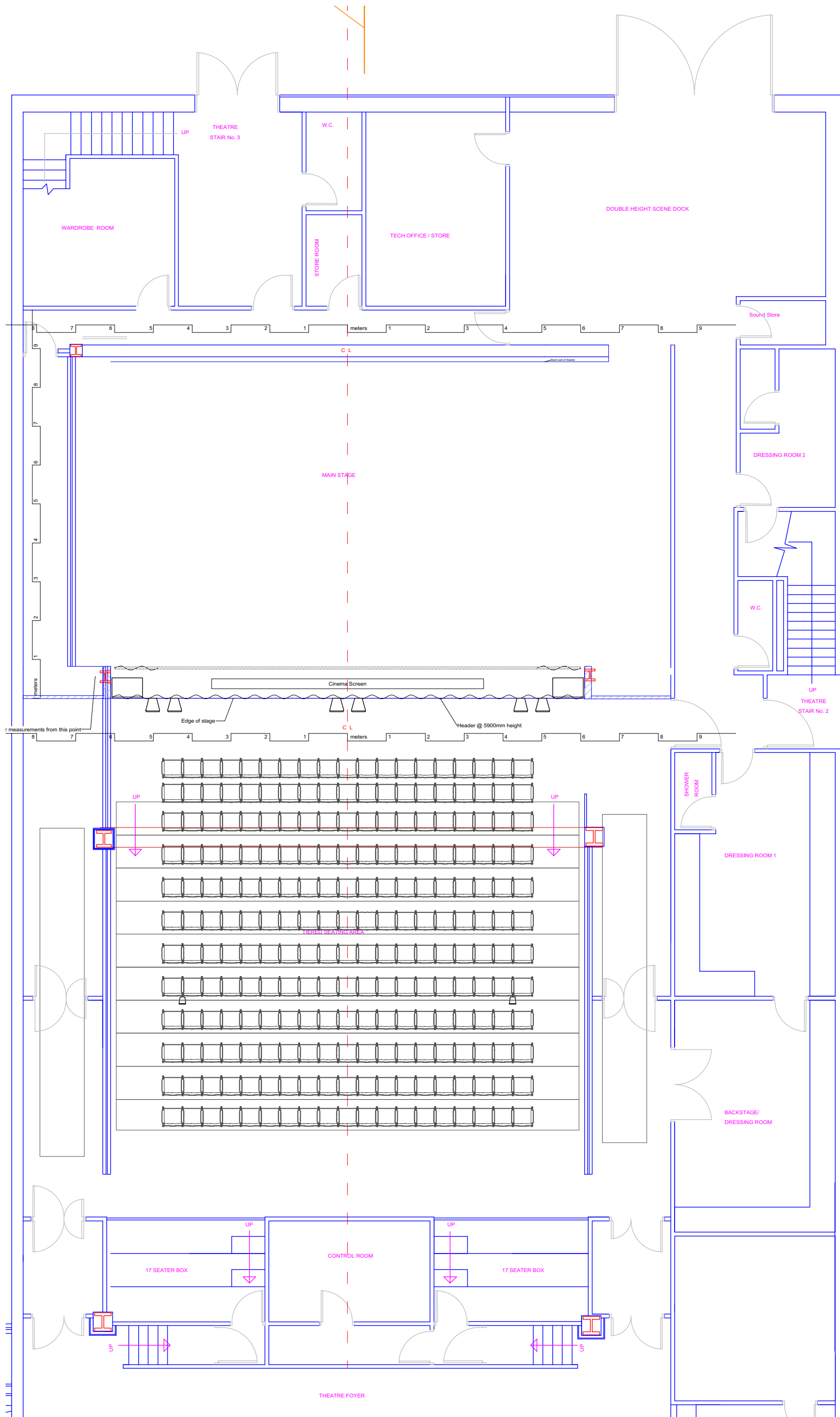
0	Initial Issue	SS	16/02/17
Rev.	Description	Drawn/Checked	Date

**STAGE AND AUDITORIUM
 TECHNICAL LAYOUT -
 LIGHTING TRUSSES**

Drawn by :	SS	Date :	March 2017
Checked by :		Date :	
Approved by :		Date :	

Scales : 1:100 @ A3

Drawing No. :	PAV - 001	Revision:	2.1
---------------	-----------	-----------	-----

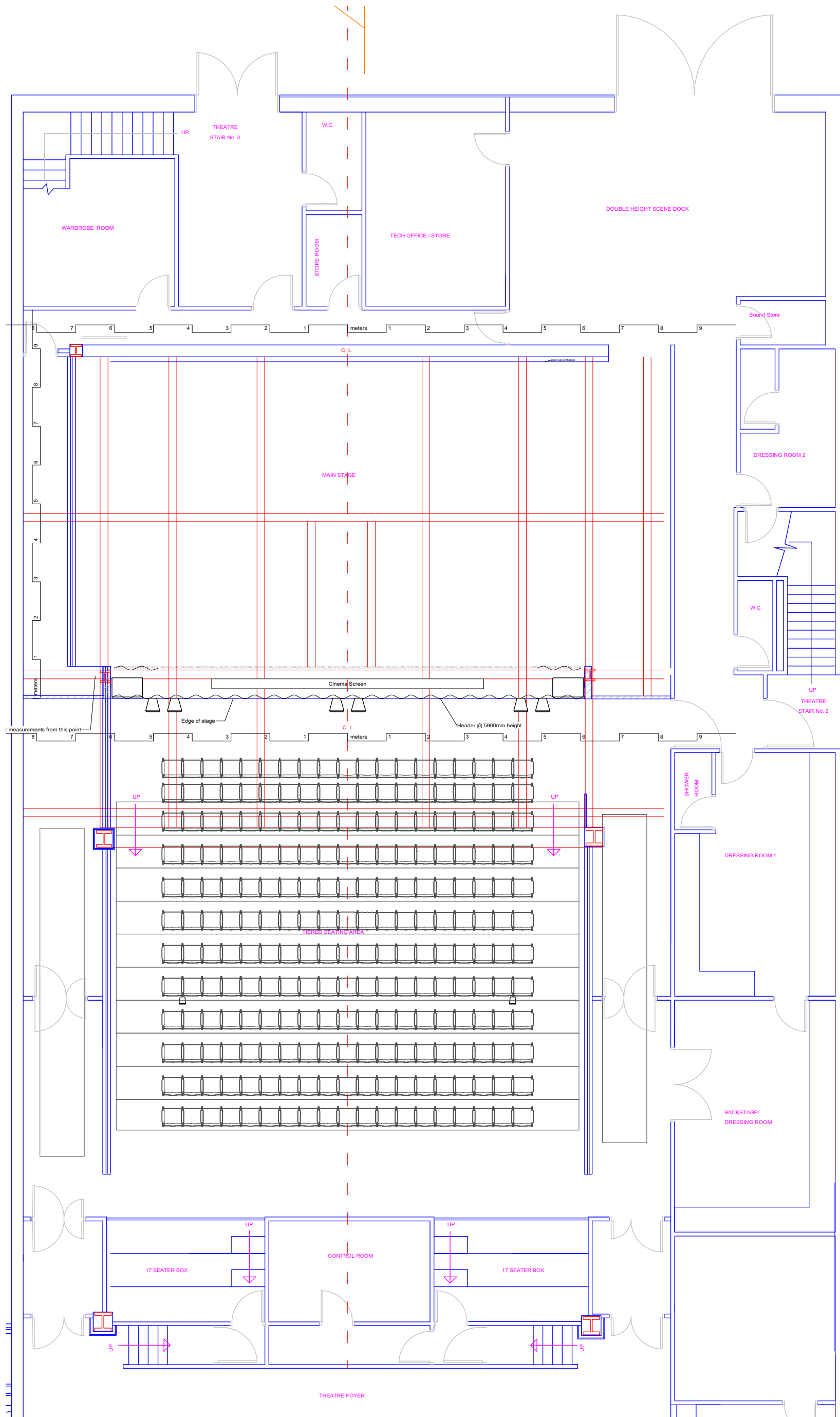


0	Initial Issue	SS	16/02/17
Rev.	Description	Drawn/Checked	Date

Drawing Title
**STAGE AND AUDITORIUM
 TECHNICAL LAYOUT -
 STAGE PLAN**

Drawn by :	SS	Date :	March 2017
Checked by :		Date :	
Approved by :		Date :	

Scale :	1:100 @ A3
Drawing No. :	PAV - 002
Revision:	2.1



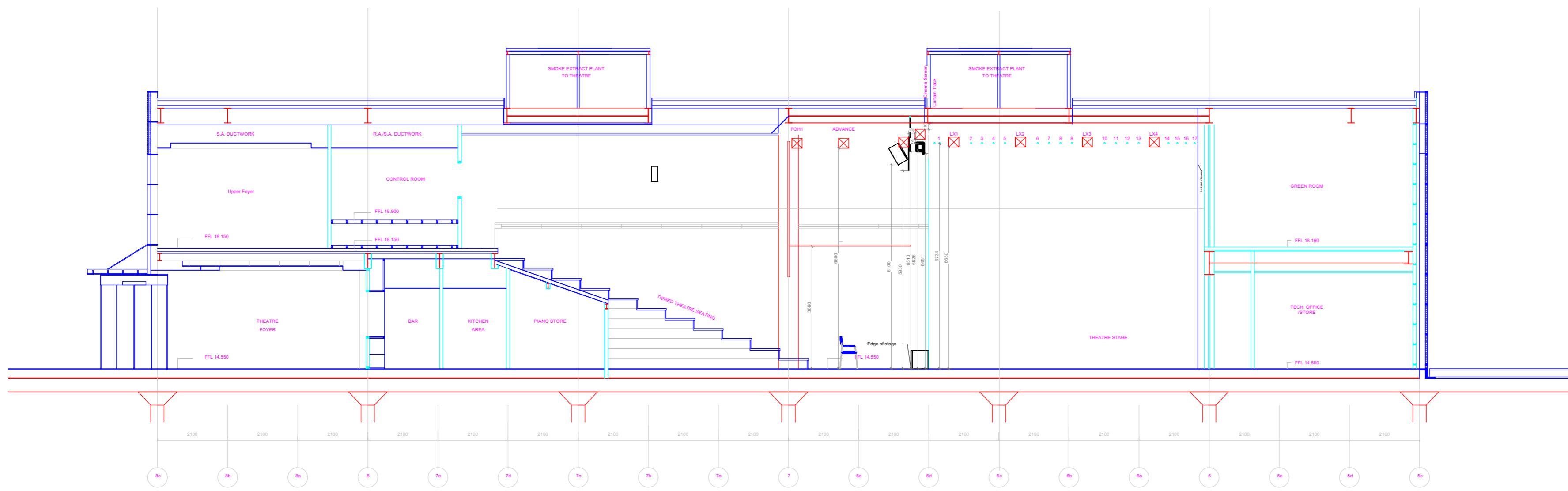
0	Initial Issue	SS	16/02/17
Rev.	Description	Drawn/Checked	Date

**STAGE AND AUDITORIUM
TECHNICAL LAYOUT -
STEELWORK**

Drawn by :	SS	Date :	March 2017
Checked by :		Date :	
Approved by :		Date :	

Scale :	1:100 @ A3
Drawing No. :	PAV - 002
Revision:	2.1

1. All dimensions provided are indicative only. Any critical dimensions to be confirmed on location.



SECTION A-A

Rev.	Description	Drawn/Checked	Date
0	Initial Issue	SS	16/02/17

Drawing Title

SECTION A-A

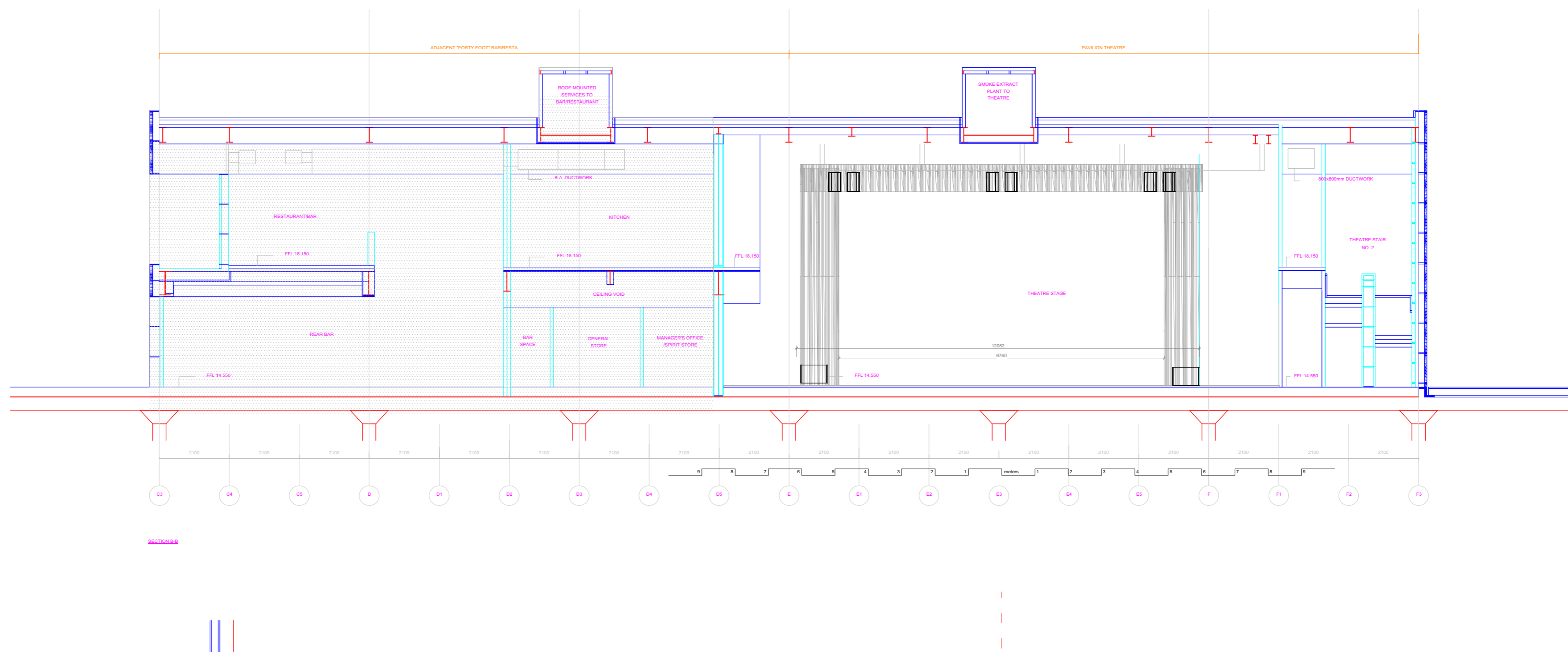
Drawn by : ED. Date : March 2017
 Checked by : Date :
 Approved by : Date :

Scales : 1:100 @ A2

Drawing No. : PAV - 003 Revision: 2.1

NOTES:

1. All dimensions provided are indicative only. Any critical dimensions to be confirmed on location.



Rev.	Description	Drawn/Checked	Date
0	Initial Issue	SS	16/02/17

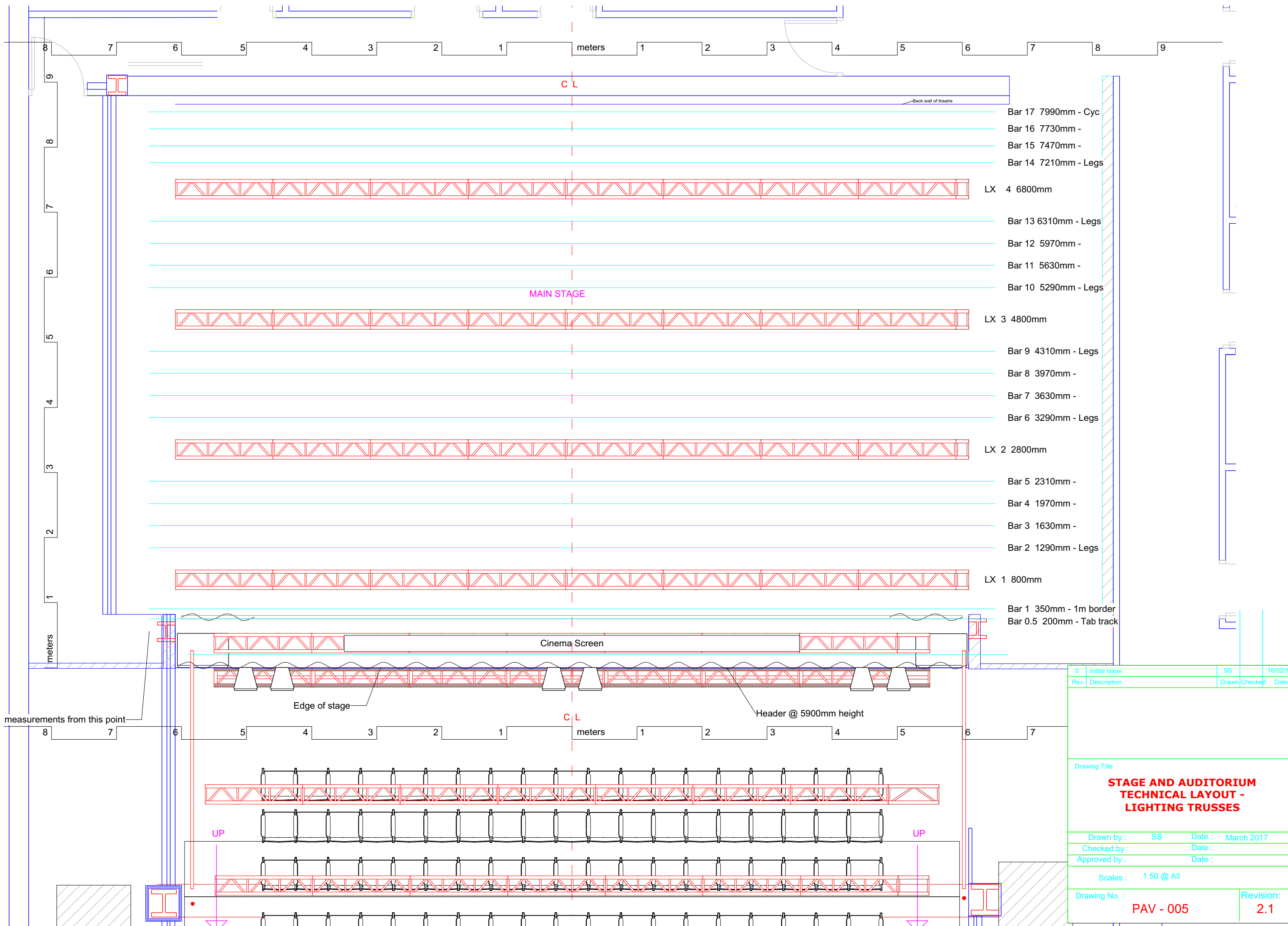
Drawing Title

SECTION B-B

Drawn by :	SS	Date :	March 2017
Checked by :		Date :	
Approved by :		Date :	

Scales : 1:100 @ A2

Drawing No. :	PAV - 004	Revision:	2.1
---------------	-----------	-----------	-----



- Bar 17 7990mm - Cyc
- Bar 16 7730mm -
- Bar 15 7470mm -
- Bar 14 7210mm - Legs
- LX 4 6800mm
- Bar 13 6310mm - Legs
- Bar 12 5970mm -
- Bar 11 5630mm -
- Bar 10 5290mm - Legs
- LX 3 4800mm
- Bar 9 4310mm - Legs
- Bar 8 3970mm -
- Bar 7 3630mm -
- Bar 6 3290mm - Legs
- LX 2 2800mm
- Bar 5 2310mm -
- Bar 4 1970mm -
- Bar 3 1630mm -
- Bar 2 1290mm - Legs
- LX 1 800mm
- Bar 1 350mm - 1m border
- Bar 0.5 200mm - Tab track

0	Initial Issue	SS	16/02/17
Rev.	Description	Drawn/Checked	Date

Drawing Title

STAGE AND AUDITORIUM TECHNICAL LAYOUT - LIGHTING TRUSSES

Drawn by : SS Date : March 2017

Checked by : Date :

Approved by : Date :

Scales : 1:50 @ A3

Drawing No. : PAV - 005 Revision: 2.1